



GMax™ II Standard

The Industry Standard in Petrol-Powered Airless Sprayers



STANDARD
SERIES

EVERYDAY RELIABILITY

- Trust in proven technology with the Advantage Drive System. Runs quiet and is guaranteed for life!
- Rely on the industry standard: the Graco Endurance™ Pump.
- Count on the SmartControl™ 3.0 Pressure Control to get your daily job done! It delivers a consistent spray fan without fluctuations while protecting your investment against bad power conditions.

AEMCO

+966-11-2637048
marketing@aemco-llc.com
www.aemco-llc.com

جده الدمام الرياض
Riyadh Dammam Jeddah



Genuine People
Genuine Spares
Genuine Service

Heavy Duty Applications

GMAX™ II 3900 STANDARD - GMAX™ II 5900 HD STANDARD - GMAX™ II 7900 HD STANDARD



GMax™ II Standard

Petrol-Powered Airless Sprayers

This is for **YOU** when you're looking for technology that gets the job done. Technology that has proven to do the trick, time and time again.

The GMax II family consists of Graco's most popular petrol powered airless sprayers for professionals. With over 25 years experience of proven quality and unmatched on-the-job productivity, it has become an industry standard. A standard you can trust to get the job done.

The **Standard Series** are suited for professionals that don't need extras but are looking for everyday reliability to get the job done fast and easy.

Choose the right unit...

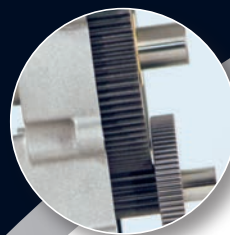
The GMax II range is ideally suited for high production professional contractors who demand uninterrupted performance with freedom from electric power.

The GMAX™ II 3900 (120 cc) is the perfect sprayer for professional paint jobs on new residential construction job sites.

The GMAX II 5900 is a step up from that. With its 160 cc Honda engine, it delivers the output you require for larger commercial paint projects. Along with its high performance 200 cc Honda engine, the GMAX II 7900 HD is equipped with a heavy duty pump, and as such can easily spray all thicker coatings as well as the whole range of primers and paints.

... and go for the Standard Series for everyday reliability!

Have a look at the features that have turned our GMAX II range into the industry standard. Discover this standard, like so many other professionals have already.



Advantage Drive™

The drive is the critical link between the engine and the pump.

Graco doesn't leave the manufacturing of our Advantage Drive System to others; we design and manufacture them at our world-class manufacturing facility in the United States.

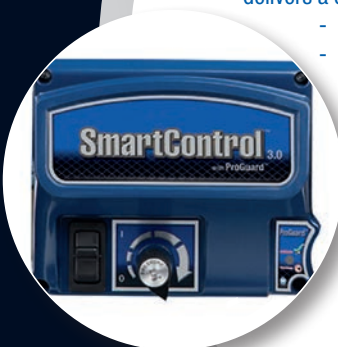
- Hardened steel gears run extremely quietly
- The most durable, longest lasting drive in the industry

SMARTCONTROL™

SmartControl™ 3.0 with Pressure Gauge

Graco's advanced SmartControl 3.0 offers precision pressure control that delivers a consistent spray fan without pressure fluctuations.

- Spray thicker coatings and run longer hoses
- ProGuard™ Sprayer Protection System guards against bad or extreme job site power conditions



Endurance™ Pump

Graco's proven and reliable piston pump technology with LongLife-V packings.

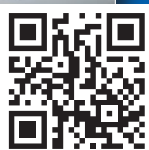
QuickAccess™ intake valve to easily clean or clear debris. Spring loaded for better pump efficiency.



Materials & Applications

The GMAX II STANDARD series are ideal units to spray a full range of coatings on residential, commercial and industrial jobs.

Spray acrylics, primers, emulsions, waterborne and solvent based paints with the 3900 and 5900, or move up to the 7900 HD version and be able to handle most common anti-corrosive and fire retardant paints and airless plasters as well!



Watch our application videos at:
<http://21.graco.eu.com>



All units equipped with 15 METER hose



TiltBack™ Cart Design
Sprayer kick stand allows convenient, one person bucket change and facilitates cleaning and maintenance of your pump.

www.graco.com



GOOD TO KNOW

EXTEND YOUR SPRAYING AUTONOMY

When used with a hopper or container suction kit, you can work for longer periods of time before refilling. Use for overnight storage or to transport your material. You will save energy, time and money.

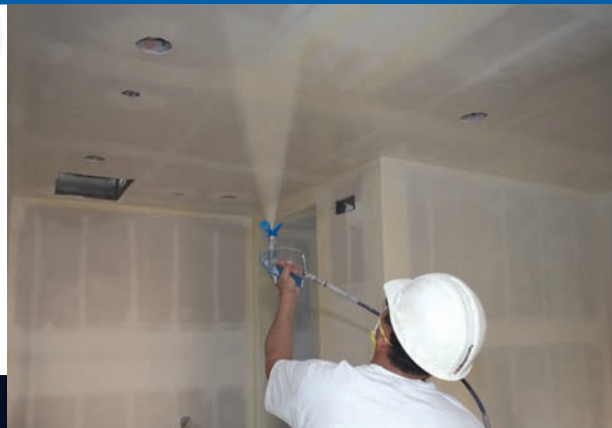


! TIP

ALWAYS BEGIN WORKING AT LOW MATERIAL PRESSURE.

Slowly raise the pressure, but only to the minimum pressure required for a successful application. Using too much pressure can cause pack-out due to aggregated materials or dirt.

For improved pump performance when spraying paint with the GMAX II 7900 HD unit, replace the ceramic ball in the lower pump with the SST ball (delivered free with the unit).



Honda® Engines

The industry standard engine for the industry standard sprayer!
All GMAX II units are equipped with contractor preferred Honda engines that deliver unmatched performance to the pump.
With 120 cc, the GMax II 3900 is well suited for professional paint jobs on new residential construction job sites, whereas with the 160 cc displacement on the GMAX II 5900, you can easily tackle bigger commercial sites.
The power horse in this family is the engine on the GMax II 7900 HD. With its 200 cc, it delivers the performance needed to handle the thickest coatings.



HONDA ENGINES



GMax II Standard Accessories

Get the most out of your equipment, using our professional accessories

Improve your finishing quality



Guns

- 262114 Contractor™ Airless gun, RAC X™ guard, no tip
- 289605 TexSpray™ blue gun with RAC X guard and RAC X 531 tip
- 245820 Inline™ 4-finger Plaster gun, 280 bar

Tips, Guards and Air Nozzles



- PAAXXX Blue RAC X tip for paint
- HDAXXX Brown RAC X tip for spack, heavy coatings
- WAXXXX Wide RAC X tip for big surfaces, 120° angle
- 246215 RAC X guard

RAC X Tip Extensions

- | | | | |
|--------|-------|--------|-------|
| 287019 | 25 cm | 287020 | 40 cm |
| 287021 | 50 cm | 287022 | 75 cm |



CleanShot™ RAC X Pole Gun

- | | | | |
|--------|-------|--------|--------|
| 287026 | 90 cm | 287027 | 180 cm |
|--------|-------|--------|--------|



Rollers Exterior (complete)

- 6880095 30 cm fixed
- 098084 90-180 cm telescopic
- 098085 45-90 cm telescopic



Hoses (230 bar)

- | | | | |
|--------|-------------|--------|-------------|
| 240794 | 1/4" x 15 m | 240797 | 3/8" x 15 m |
| 223771 | 1/4" x 30 m | 241275 | 3/8" x 30 m |
| 241272 | 1/4" x 20 m | | |



Whips (230 bar)

- | | | | |
|--------|---------------|--------|---------------|
| 238358 | 3/16" x 0.9 m | 238959 | 3/16" x 1.4 m |
| 238359 | 3/16" x 1.8 m | | |



Hose Connectors

- | | |
|--------|-----------------------|
| 156971 | 1/4" x 1/4" (M) x (M) |
| 157350 | 1/4" x 3/8" (M) x (M) |



Gun, Tip, Hose Kits



- 288491 Contractor gun, 1/4" X 15 m hose, 3/16" x 0.9 m whip, RAC X PAA621 tip, 248 bar
- 289611 TexSpray blue gun, 3/8" X 15 m hose, 1/4" x 0.9 m whip, RAC X 531/427 tip, 276 bar
- 289585 Inline 4-finger plaster gun, 1/2" x 15 m hose, 3/8" x 3.6 m whip, RAC X 643 + WA 1239 tip, 280 bar

Standard Endurance™ Pump Lower

- 16Y598 GMax II 3900
- 16Y706 GMax II 5900
- 16X429 GMax II 5900 HD
- 16X423 GMax II 7900
- 16X425 GMax II 7900 HD



Additional Accessories

- 287987 90 liter hopper kit
- 289587 Bag roller
- 24M445 Heavy duty container suction kit 40 cm 2" hose with 1" to DIN C clamp connectors.



Easy Out™ Gun Filters

- 287032 Easy Out gun filter, 60 mesh x 1
- 287033 Easy Out gun filter, 100 mesh x 1
- 287034 Kit: 60 mesh x 1 + 100 mesh x 1



Easy Out™ Pump Filters

- | | | | |
|--------|----------------|--------|----------------|
| 244071 | 30 mesh, grey | 244068 | 100 mesh, blue |
| 244067 | 60 mesh, black | 244069 | 200 mesh, red |



Liquids

- 206994 TSL™ 0.25 l
- 253574 Pump Armor™ 1 l
- 245133 Pump Armor 3.8 l



GMax II Standard

Unpack, plug & spray!

Ready to go, the GMax Standard Series ship complete and ready to spray. SmartControl™ 3.0, TiltBack™ cart design, whip hose, BlueMax™ II hose 15m, 246215 RAC X HandTite™ guard, gun, 206994 TSL™ 0.25 liter.

Specifications



	GMAX II 3900	GMAX II 5900	GMAX II 5900 HD	GMAX II 7900	GMAX II 7900 HD
	STANDARD	STANDARD	STANDARD	STANDARD	STANDARD
Part Numbers:	16W865	16W869	16W889	16W883	16W890
Max. Tip Size:	0.036"	0.043"	0.043"	0.048"	0.048"
Flow - l/min. (gpm)	4.7 (1.25)	6.0 (1.6)	6.0 (1.6)	8.3 (2.2)	8.3 (2.2)
Max. Pressure - bar (PSI)	230 (3300)	230 (3300)	230 (3300)	230 (3300)	230 (3300)
Pump	Paint	Paint	HD Texture	Paint	HD Texture
Weight - kg (lbs)	48.2 (106)	62.7 (138)	62.7 (138)	66.4 (146)	71.4 (157)
Engine Displacement Honda®	120 cc	160 cc	160 cc	200 cc	200 cc
BlueMax™ II Hose	1/4" x 15m	1/4" x 15m	3/8" x 15m	3/8" x 15m	3/8" x 15m
Gun	Contractor	Contractor	HD Texture	Contractor	HD Texture
Tip Standard	RAC X 517	RAC X 517	PAA427/HDA531	PAA517	PAA427/HDA531
Rod	CrN	CrN	Chrome	MaxLife	Chrome
Sleeve	Chrome	Chrome	Chrome	MaxLife	MaxLife

AEMCO

+966-11-2637048
marketing@aemco-llc.com
www.aemco-llc.com

جده الدمام الرياض
Riyadh Dammam Jeddah



Genuine People
Genuine Spares
Genuine Service

© 2014 Graco BVBA - Form No. 300718ENEU (rev.Aa) - 06/14 - Printed in Europe. Graco is certified ISO 9001.

All information, illustrations, and specifications in this document are based on the latest product information available at the time of publication. The right is reserved to make changes at any time without notice.