



BETON TROWEL NV

CONCRETE FINISHING



AEMCO

+966 11 214 0888
marketing@aemco-llc.com
www.aemco-llc.com

جده الدمام الرياض
Riyadh Dammam Jeddah



Genuine People
Genuine Spares
Genuine Service



BETON TROWEL NV takes pleasure in introducing you to our extensive range of concrete finishing and compaction equipment. We make no compromise on quality using high grade materials combined with precision engineered parts to ensure that your investment in our equipment brings you a trouble free working life and the maximum return on your capital.

Our line of concrete finishing equipment is the most extensive in Europe and covers the majority of the requirements of the concrete flooring contractor and rental organisations.



Head quartered in Belgium we are located close to the shipping port of Antwerp for prompt and easy shipping worldwide. Our highly experienced export admin team will take care of all aspects of shipping and documentation requirements.

BT RIDE ON POWER TROWELS

BT HIGH RIDERS



BT900-HPFH24.1

BT RIDE ON POWER TROWELS

BT HIGH RIDERS

MODELS	BT750	BT900-2PF	BT900-2OL	BT900H-2PF	BT900-HPF	BT900H-HPF
ENGINES	GX390	GX690	GX690	GX690	GX690	GX690
DIMS Cm	165 X 81	194 X 99	194 X 99	194 X 99	195 X 100	195 X 100
WEIGHTKG	205	275	275	325	315	370
BLADES	8	8	8	8	8	8
FLOAT PANS	YES	YES	NO	YES	YES	YES
FINISH	6 X 10	6 X 14	6 X 14	6 X 14	6 X 14	6 X 14
COMBINATION	NO	8 X 14	8 X 14	8 X 14	8 X 14	8 X 14
WIDE FINISH	NO	8 X 14	8 X 14	8 X 14	8 X 14	8 X 14
FLOAT SHOES	NO	10 X 14	10 X 14	10 X 14	10 X 14	10 X 14
PLASTIC BLADES	NO	YES	YES	YES	YES	YES
STEERING	MANUAL	MANUAL	MANUAL	POWER	MANUAL	POWER

BT TROWEL BLADES

BT TROWEL BLADES

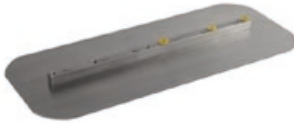
FINISH BLADES

ITEM N°	DESCRIPTION
F75416D	6" X 10" (75) BT750-2FP RIDER
F75416B	6" X 10" (75) BT75 - BARTELL B430 & BARIKELL 75-MK8
F90416	6" X 14" (90) STANDARD 1.6mm
F90416MK10	6" X 14" (90) BARIKELL MK8 WITH 10MM BOLTS
F90419	6" X 14" (90) LONG LIFE 1.9mm
F120416	6" X 18" (120) 1.6MM
F120416MK10	6" X 18" (120) BARIKELL MK8 WITH 10MM BOLTS
F120419	6" X 18" (120) LONG LIFE 1.9mm
F120516	6" X 18" (120) 1.6MM SET OF 5 BLADES
F120419LB	6" X 18" (120) 1.9MM HEAVY DUTY BLADE BAR BARTELL TS100, HTX RIDERS



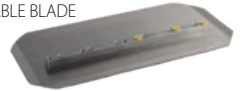
WIDE FINISH BLADES

ITEM N°	DESCRIPTION
WF90419	8 X 14" (90) REVERSIBLE
WF120419	8 X 18" (120) REVERSIBLE
WF120519	8 X 18" (120) BLADE SET OF 5 BLADES



COMBINATION BLADES

ITEM N°	DESCRIPTION
C90419	8 X 14" (90)
C120419	8" X 18" (120)
C120519	8" X 18" (120) SET OF 5 BLADES
C90419MK10	8" X 14" (90) BARIKELL MK8 WITH 10MM BOLTS
C120419MK10	8" X 18" (120) BARIKELL MK8 WITH 10MM BOLTS
C90419NC	8" X 14" (90) NORTON CLIPPER
C90419A	8" X 13" ADJUSTABLE BLADE



DYNAPAC AND MULTIQUIP EDGER BLADES

ITEM N°	DESCRIPTION
BT366693	BG21 & MQ24 BLADE MULTIQUIP 24" TROWEL & DYNAPAC, ATLAS COPCO & HUSQVARNA 60CM



FLOAT SHOES

ITEM N°	DESCRIPTION
FS7543	10 X 11"
FS9043	10 X 14" (90)
FS12043	10 X 18" (120)



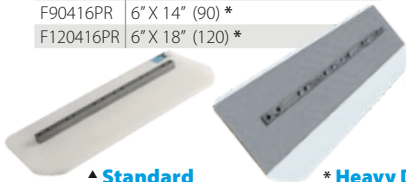
SPECIAL BLADES DYNAPAC FINISH BLADES

ITEM N°	DESCRIPTION
BT970990	BG33 CHANNEL MOUNT
BT702752	BG39 CHANNEL MOUNT



POLYPROPOLINE PLASTIC BLADES

ITEM N°	DESCRIPTION
F60412P	4 ¾" X 9" (60) ▲
F75416MP	4 ¾" X 11" (75) ▲
F90416P	8" X 14" (90) ▲
F120416P	8" X 18" (120) ▲
F90416PR	6" X 14" (90) *
F120416PR	6" X 18" (120) *

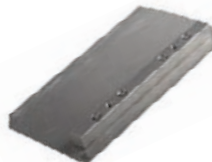


▲ Standard

* Heavy Duty

EDGER BLADES

ITEM N°	DESCRIPTION
F60412	4 ¾" X 9" 60cm
F75416M	4 ¾" X 11" 75cm



TREMIX SERIES BLADES

ITEM N°	DESCRIPTION
BT32337	G900 TREMIX 902,903 COMBI FINISH BLADE CHANNEL
BT22047	G700 TREMIX G700 FINISH BLADE CHANNEL MOUNT



BT TROWEL BLADES

BT FLOAT PANS

FLOAT PANS

ITEM N°	DESCRIPTION
FP9404P	90cm (36") FLOAT PAN 4 BRACKETS PAINTED
FP9408NP	94cm FLOAT PAN 8 BRACKETS NOT PAINTED
FP9408P	94cm FLOAT PAN 8 BRACKETS PAINTED
FP9808NP	96,5cm FLOAT PAN 8 BRACKETS NOT PAINTED (BARIKELL)
FP9808NPB	98cm FLOAT PAN 8 BRACKETS B-MAC
FP11708P	117cm FLOAT PAN 8 BRACKETS PAINTED
FP11708NP	117cm FLOAT PAN 8 BRACKETS NOT PAINTED
FP11705B/NP	117cm FLOAT PAN STANDARD BRACKETS
FP1170/5P	117cm FLOAT PAN PIN TYPE BRACKETS 5 BLADE PAINTED
FP1170/5NP	117cm FLOAT PAN PIN TYPE BRACKETS 5 BLADE NOT PAINTED
FP1220/5NP	120cm FLOAT PAN 5 BRACKETS WACKER
FP12308NP	123cm FLOAT PAN 8 BRACKETS WACKER
FP1533NP	153cm FLOAT PAN 6 BRACKETS NOT PAINTED (STX)



FLOAT PANS

ITEM N°	DESCRIPTION
FP602	60cm (24") GALVANISED FLOAT PAN – 2 BRACKETS
FP604	60cm (24") GALVANISED FLOAT PAN – 4 BRACKETS
FP604NG	60cm (24") NON GALVANISED FLOAT PAN W/ 45° EDGE
FP604PO	60cm (24") FLOAT PAN 45° ATLAS COPCO/HUSQVARNA BG245
FP7504	75cm (30") GALVANISED FLOAT PAN 90° EDGE
FP7504NG	75cm (30") NON GALVANISED FLOAT PAN 90° EDGE
FP7508	75cm (30") FLOAT PAN 8 BRACKETS 90° BT750 RIDER
FP7754	75cm (30") FLOAT PAN 4 BRACKETS 45° EDGE NOT PAINTED
FP7754PO	75cm (30") FLOAT PAN 4 BRACKETS 45° PAINTED
FP7758	75cm (30") FLOAT PAN 8 BRACKETS 45° EDGE NOT PAINTED

BT2WMS TOPPING MATERIAL SPREADER

- Handle folds down for ease of transportation
- Fold down stand for ease of material loading
- Wheels drive axle blades
- Each wheel is independent allowing easy turning in tight spaces
- Exact material discharge per square metre
- Discharge rate 1 to 6KG
- Max hopper load 100KG





BETON TROWEL NV

CONCRETE FINISHING & COMPACTION **2020**

DEALER:

AEMCO

+966 11 214 0888
marketing@aemco-llc.com
www.aemco-llc.com

جده الدمام الرياض
Riyadh Dammam Jeddah



Genuine People
Genuine Spares
Genuine Service

AS GOOD AS IT GETS!



ABOUT AEMCO

AEMCO was established in 2007 as an organization focused to increase professionalism and productivity in the arena of coating and surface preparation across the Kingdom of Saudi Arabia. Latest trends and technologies in coating industry were made available from AEMCO to our professional end users to achieve quality results and satisfaction. We started our operations in Riyadh and expanded to Central, Eastern, Western and Northern Region of the Kingdom.

نبذة عن الشركة:

تأسست شركة إيمكو في عام ٢٠٠٧ لتكون شركة تركز على زيادة الاحترافية والإنتاجية في ميدان الطلاء وتجهيز الأسطح للدهان في المملكة العربية السعودية. وفرت شركة إيمكو أحدث أساليب التقنية في مجال تنفيذ الطلاء لعملائنا المحترفين في صناعة تنفيذ الطلاء للوصول الى نتائج مبهرة ومرضية. بدأنا عملياتنا في الرياض وتطورت لتصل الى المنطقة الوسطى، المنطقة الشرقية، المنطقة الغربية والمنطقة الشمالية من المملكة العربية السعودية.

AEMCO LOCATIONS

RIYADH	DAMMAM	JEDDAH
Second Ring Road, Near Morni, As Sulay, Riyadh:14285, KSA Tel: +966 11 2140888	King Abdul Aziz Road, Opp.DHL Head Office, Thuqba Area , Al-Khobar KSA. Tel: +966 13 8021334	Prince Abdul Majeed Road, North Obhur. Al Shera'a District, Jeddah: 23814, KSA Tel: +966 11 2637048

All written and visual data contained in this document is based on the latest product information available at the time of publication.
AEMCO reserves the right to make changes at any time without notice

AEMCO

+966 -11- 21 40 888
marketing@aemco-llc.com
www.aemco-llc.com

جده الدمام الرياض
Riyadh Damman Jeddah



Genuine People
Genuine Spares
Genuine Service